








STE38-A Keypad Prepaid Three Phase Electricity Meter

-  **IP54** Ingress protection IP54 waterproof
-  **Up to 8 years battery life**
-  **Remote connection/disconnection**
-  **STS** STS Standard
-  **Real-time clock**
-  **TOU** Utilities can set TOU price into meter on request
-  **Anti-Tamper**
Magnetic field protection
-  **LORA-RF communication (optional)**
-  **Pay by mobile payment**
M-PESA, Alipay, MTN, Airtel, etc.



STE38-A is an STS Standard compliant, keypad type, automatically valve controlled prepaid three phase electricity meter. It can be top up by Power Guard vending software with 20 digital Token and communicate with AMI system via LORA-RF module.

Application:

Counting the electricity consumption of users over a period of time.

Compliance with Standard

- * ISO 9001 ; ISO 14001
- * STS Certificated

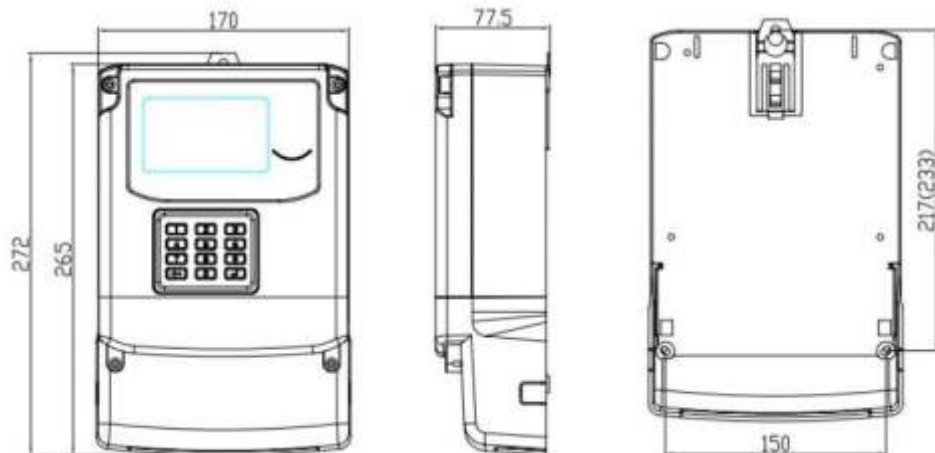
Electrical Parameters

Nominal Voltage	3×230V
Working Voltage Range	70%~120%Un
Nominal Frequency	50-60Hz
Basic Current (Ib)	10A
Maximum Current (Imax)	100A
Starting Current (Ist)	30mA
Active Energy Constant	400imp/kWh
Active Energy Accuracy	Class 1.0
Reactive Energy Accuracy	Class 2.0
Power Consumption in Voltage Circuit	<2W <8VA
Power Consumption in Current Circuit	<1VA
Operation Temperature Range	-25°C-70°C
Storage Temperature Range	-40°C-85°C

Electric Magnetic Compatibility

AC Insulation Strength	4kV at 50Hz during 1min	
Impulse voltage 1.2/50 us mains connections	8kV	
Electrostatic Discharges	Contact discharge	8kV
	Air discharge	16kV
Electromagnetic RF Field	27MHz-500MHz	10V/m
	100KHz-1GHz	30V/m
Fast transient burst test	4kV	
Protection	Class II	

Meter Dimension



The integrated keypad of single phase electricity meter is offered to enter recharge TOKEN and check information by short codes.

Power guard Vending software could be integrated to local Mobile Money Payment like M-PESA, Alipay, MTN, Airtel, etc.

Basic Functions

- *Meter Recharge By Inputting TOKEN
- *Active energy measurement
- *MD(maximum demand measurement)
- *Auto scroll mode display
- *Build-in relay control
- *Event log
- *Low Credit Alarm

Communication:

The meter is available with AMI system through LORA-RF or PLC module on request.

TOU Tariff:

Meters can be set TOU Tariff by inputting corresponding TOKEN. Utilities can set 3 step prices on request.

Anti-Tamper Functions:

Meter will automatically close the valve after detection of magnetic field or open cover event. Working normally after inputting clear tamper Token.

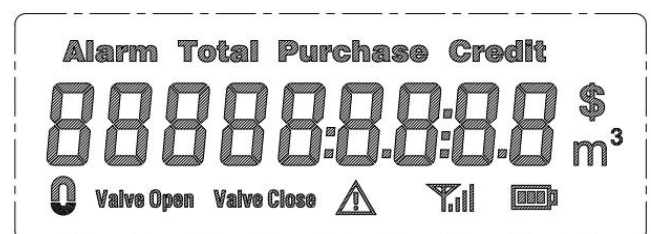
Overdraft Collection:

Electricity Overdraft can be collected day by day or month by month.

Information Inquiry:

Consumer could check the data like Credit Remain, Total Purchased and Total Credit by inputting the short code.

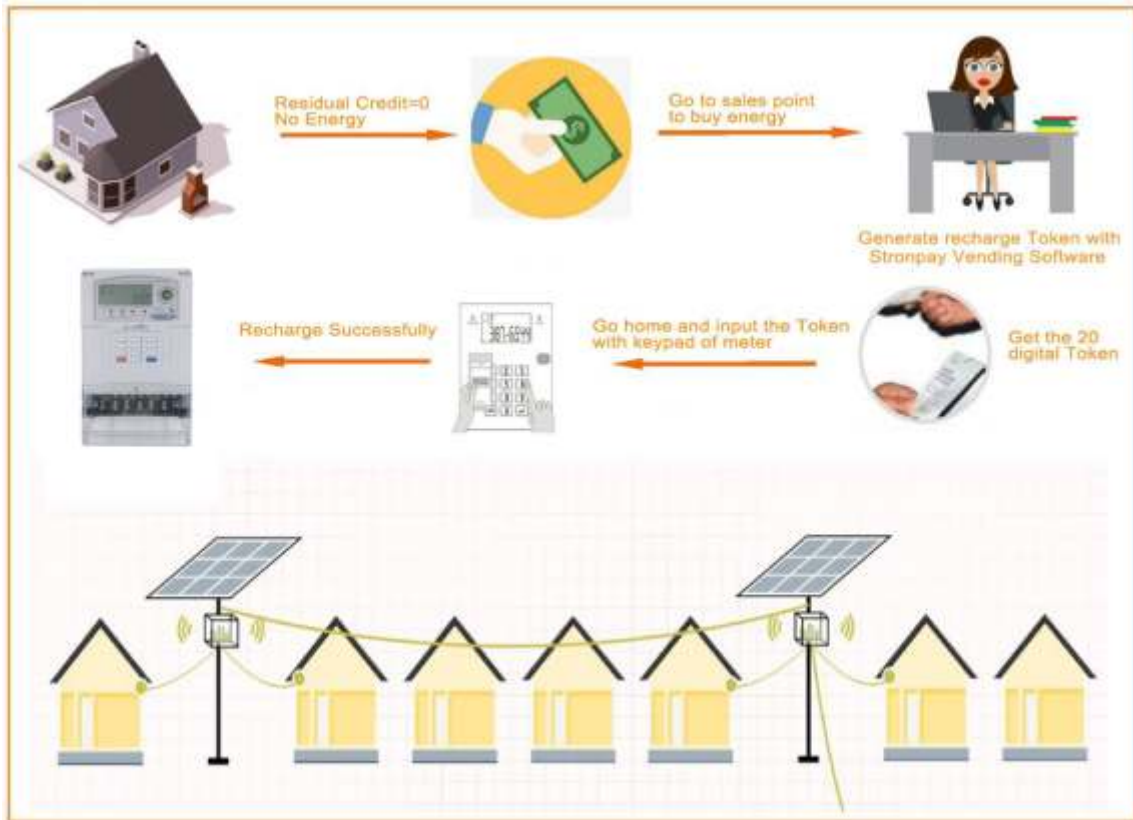
Liquid Crystal Display:



Three solutions to recharge prepaid electricity meter

1.

⇒ Via local sales point or handheld mobile vending unit



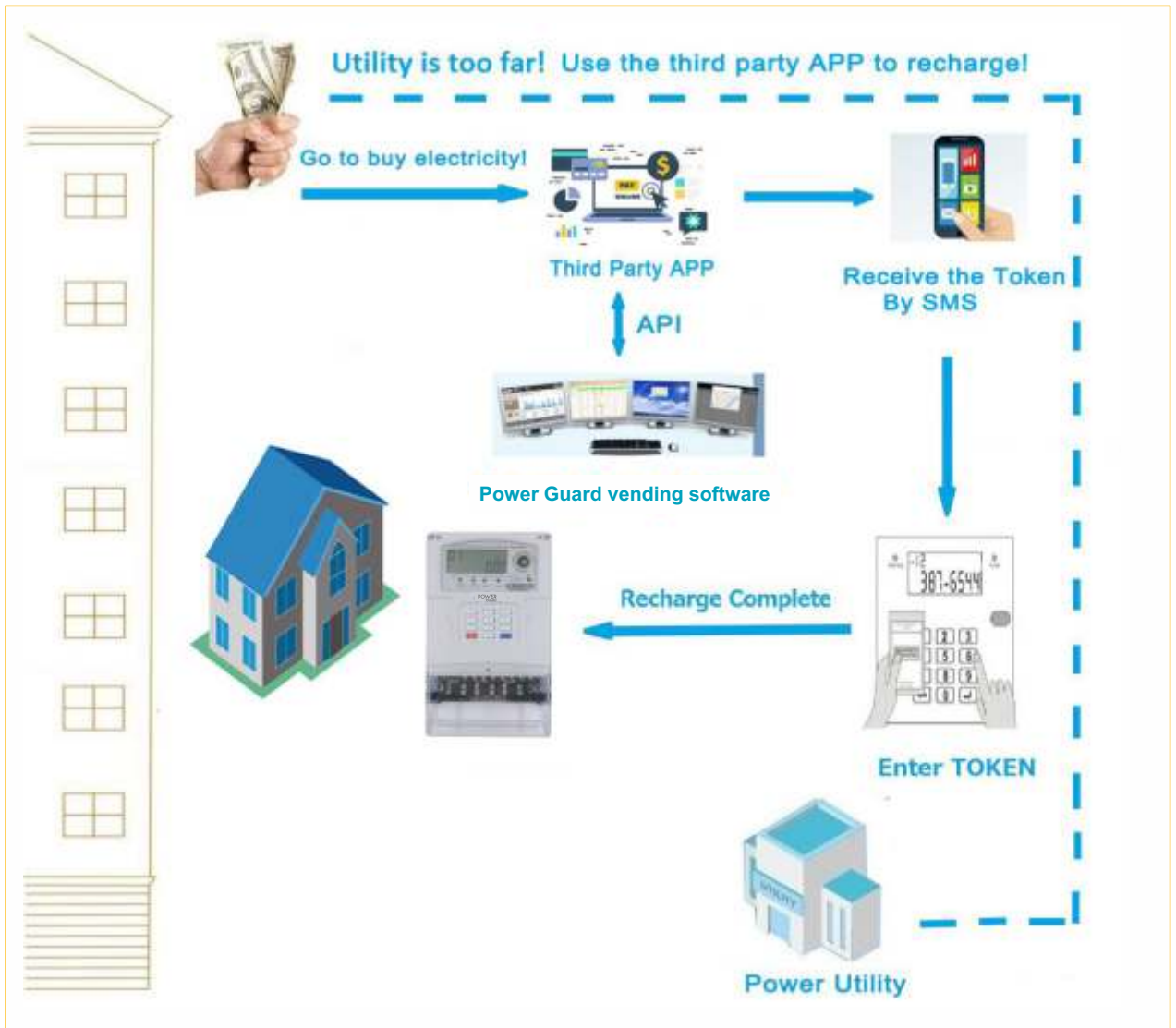
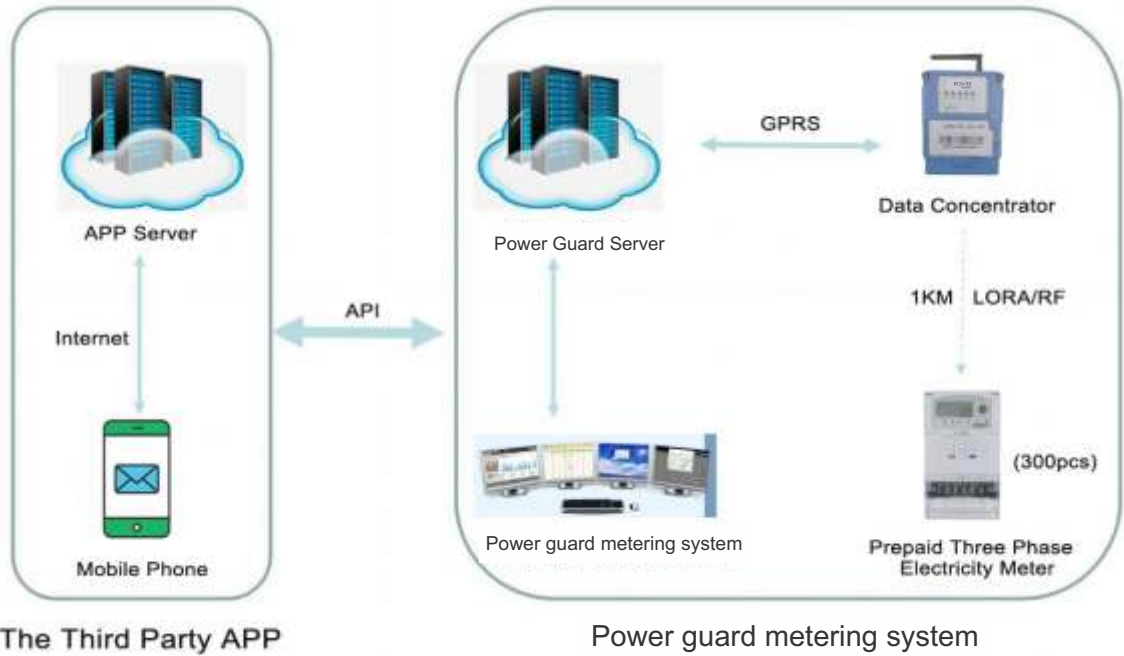
Operation of vending software

1. Login vending system
2. Meter number registration
3. Customer information registration
4. Price Setting
5. Open Account
6. Vending/Topping up meters
7. Get the Token
8. Input Token to meter with keypad
9. Recharging successfully

2. By the third party platform or local mobile payment with API

⇒ Via mobile phone

API: Application Program Interface, which is the agreement connecting the third party APP and our Stronpay vending software.

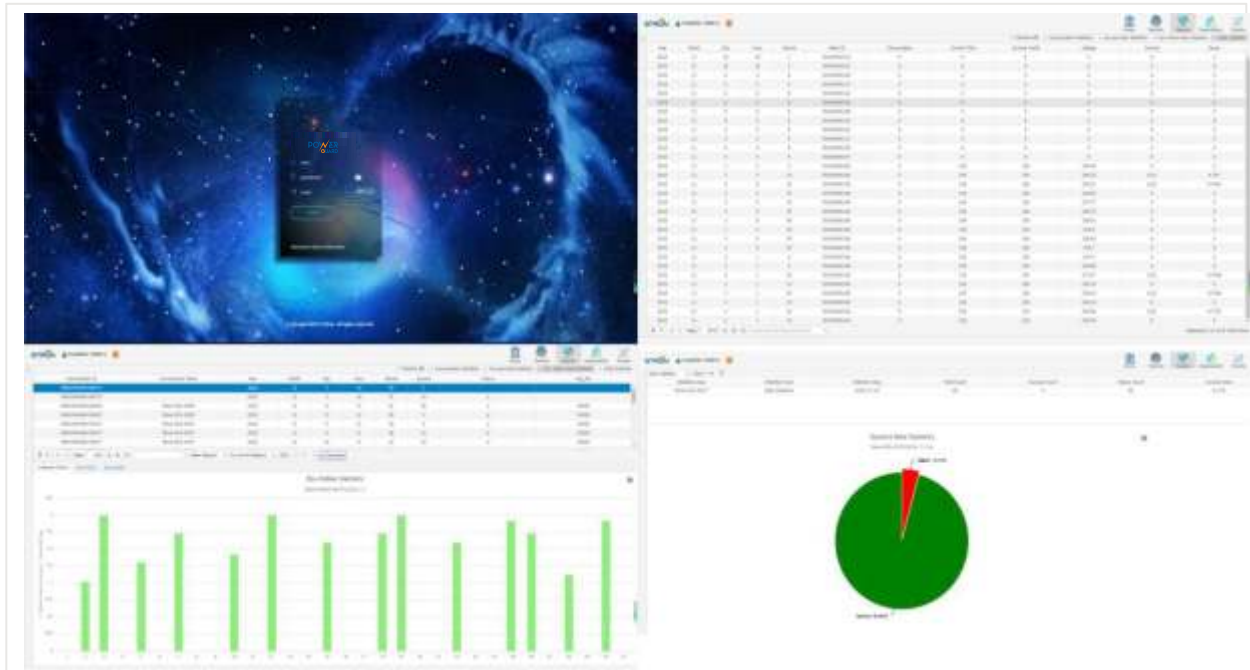


The advantages to recharge with mobile payment:

- * Users can top up electricity by mobile money without leaving the house.
- * Users could check information by their telephone.
- * It helps utilities for Revenue protection and consumer management.

3. By the AMI System

⇒ Recharge remotely via DCU and LORA-RF or PLC module



How to recharge by AMI System?

